

# THINKWARE DASH CAM™

## Activation of the Vodafone Sim (Smart Sim) using the Vodafone Smart App for Thinkware DashCam

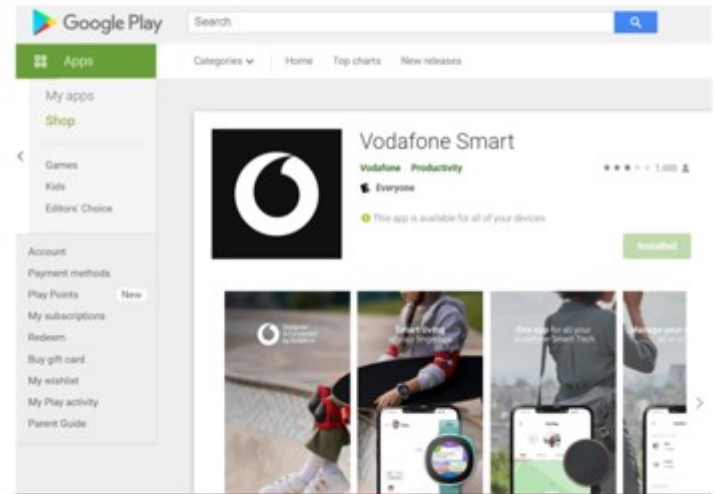
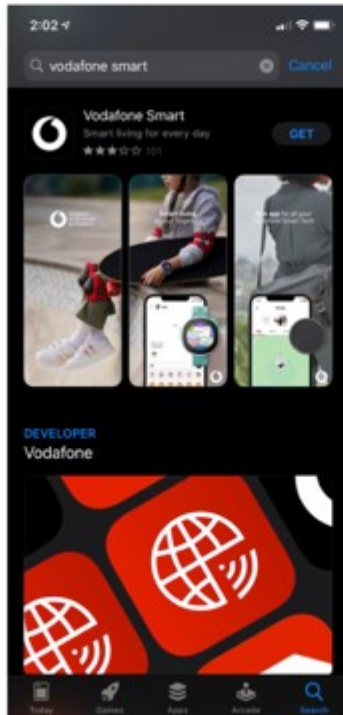
Guide for users / installers

**Video tutorial:**

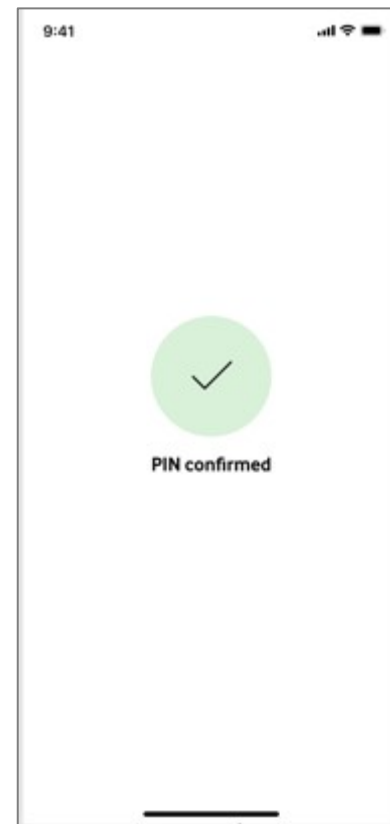
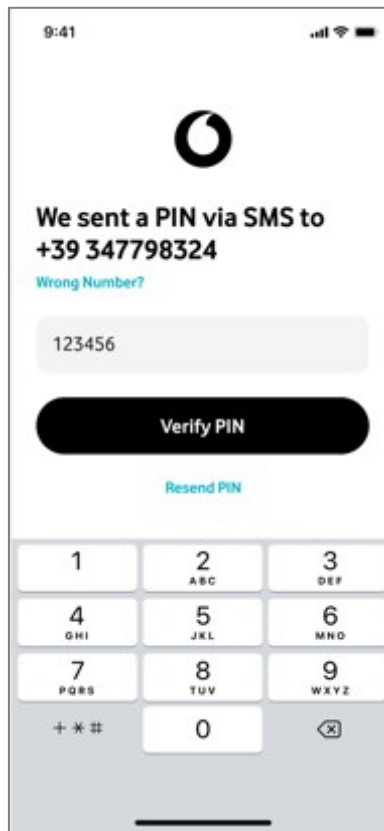
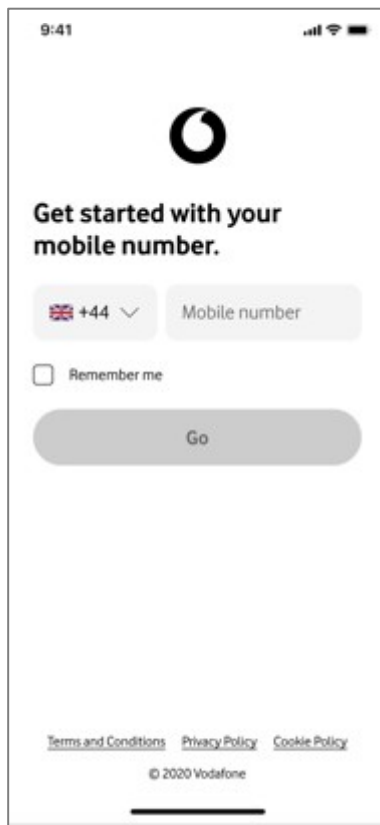
<https://youtu.be/n0tlifKvXLY>

# Download the Vodafone SmartApp on the end users mobile Phone

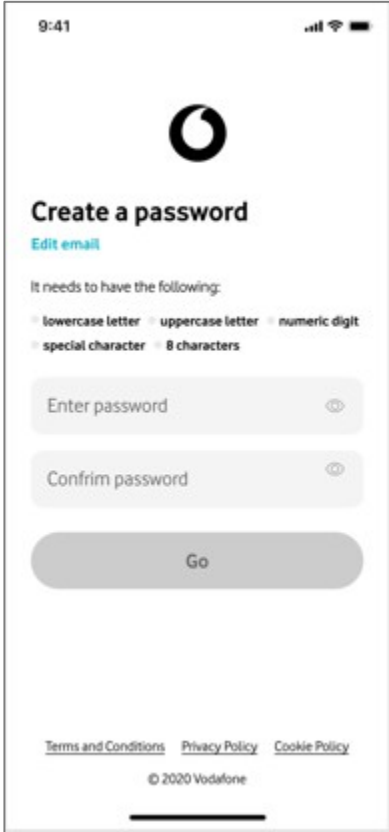
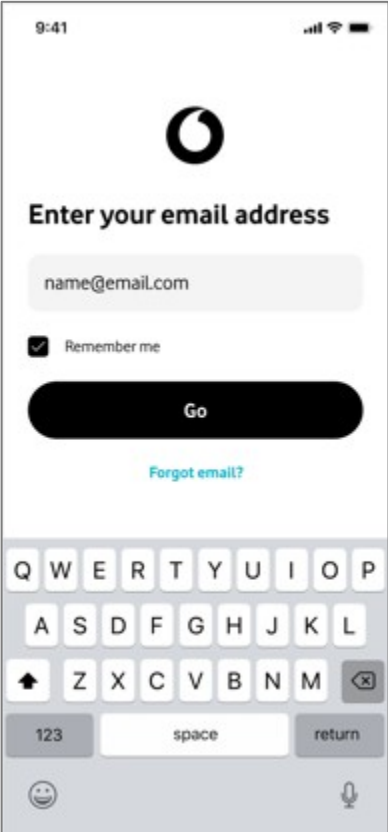
- It is important that the Vodafone Smart App is downloaded to the end customer's Mobile handset so that the customer can manage the mobile subscription through the Vodafone SmartApp.



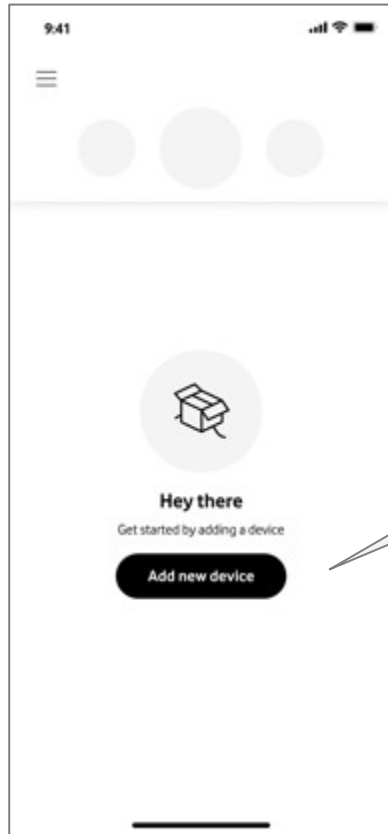
# Login - for customers with a mobile



# Login - extra steps for customers without a Vodafone mobile

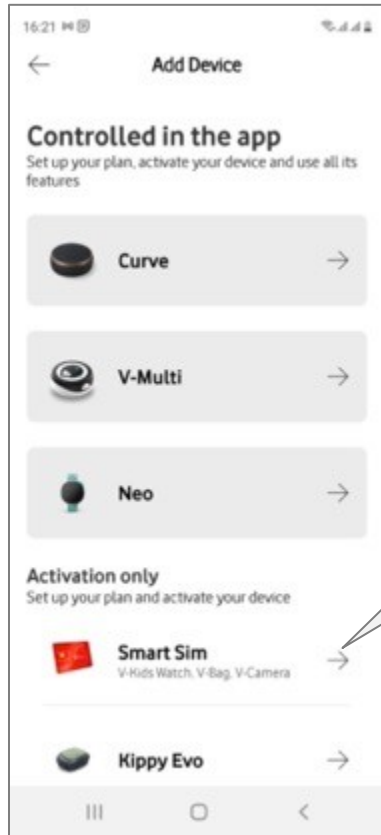


# Vodafone Smart App home screen

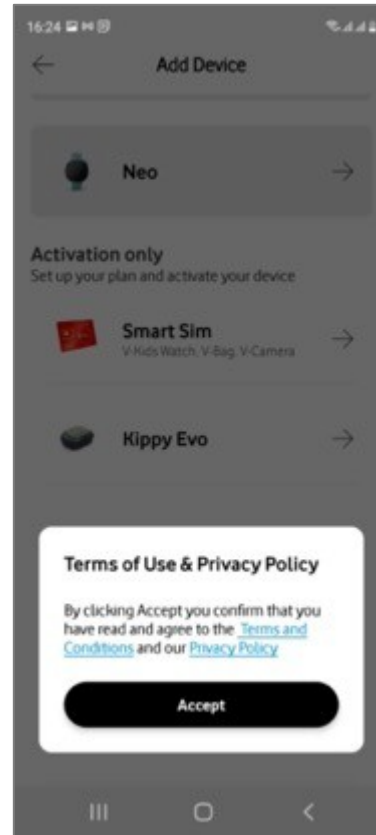


Press on "Add new device"  
to start the onboarding  
process

# Select product for onboarding



Select Smart Sim from the product list



Accept the Smart Sim Terms & Conditions and Privacy Policy

# Enter credit card info - only for customers without a Vodafone mobile

11:52 LTE

To complete your Vodafone account, we just need some more details from you.



- Add Debit/Credit card
- Add Personal details
- Add your product

**Add Debit/Credit card**

Not now

11:53 LTE

**My payment details**  
This is a secure SSL encrypted payment.

Card number  

Name on card

Expiry date CV security code

MM / YY

**Save**

**Cancel**

# Enter personal info - only for customers without a Vodafone mobile

11:54 LTE

To complete your Vodafone account, we just need some more details from you.

- Add Debit/Credit card
- Add Personal details
- Add your product

**Add Personal details**

Not now

11:54 LTE

Our website uses cookies to give you a better experience, and by using our site you accept our cookies policy. To manage cookies click here.

Vodafone ID  
[What is Vodafone ID](#)

Enter email address

Please tell us your email address so we can verify your account for future login.

Your email \*

**Continue**

Back

Terms and Conditions | Privacy Policy

© 2021 Vodafone

Phone number

+44 7466724103

Given name \*

Last name \*

Country

Great Britain

Street address \*

Done

11:55 LTE

London

City/Town \*

London

Postcode \*

124678

Date of birth \*

Month Year

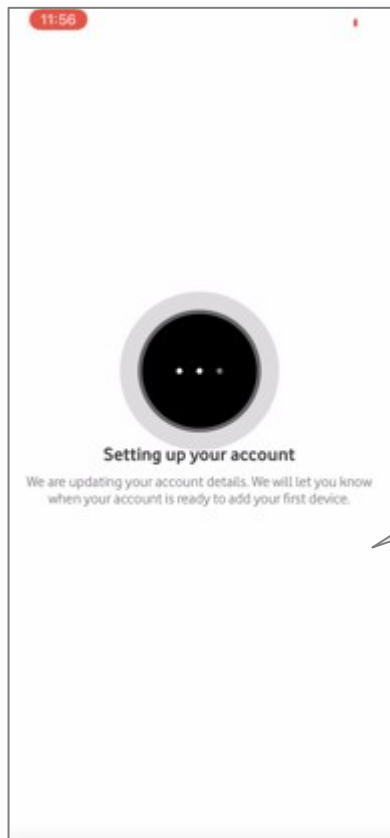
**Continue**

Back

Done



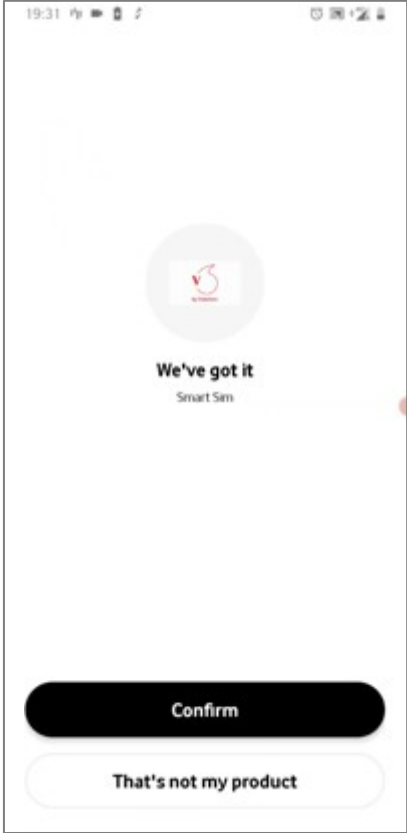
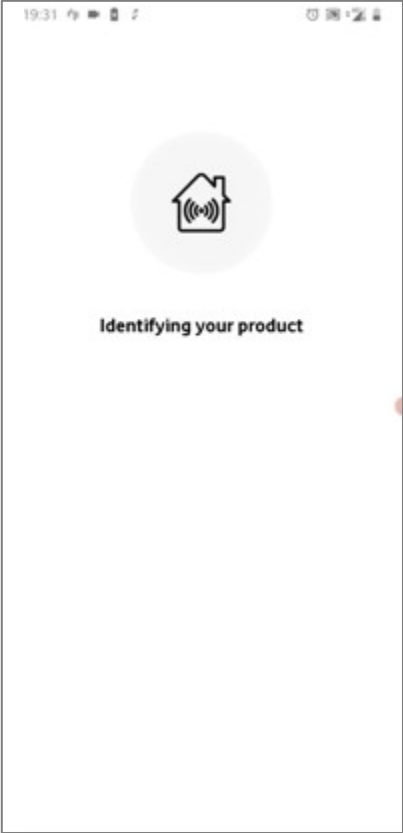
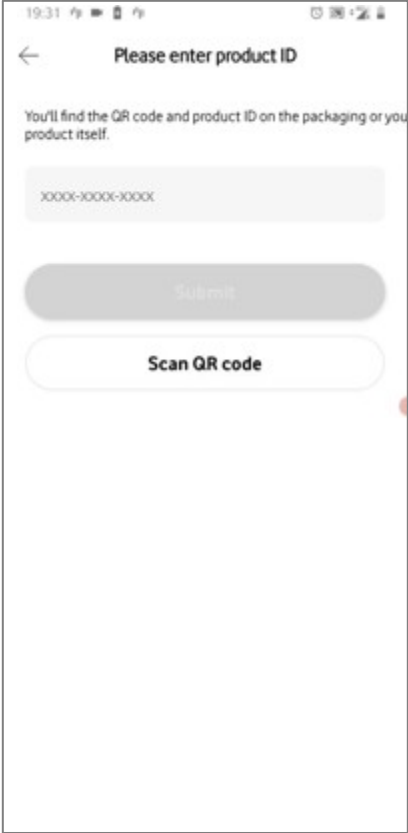
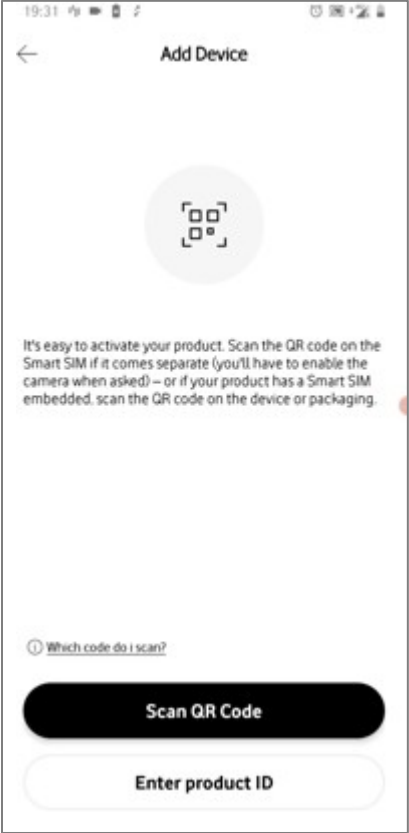
## Saving user info - only for customers without a Vodafone mobile



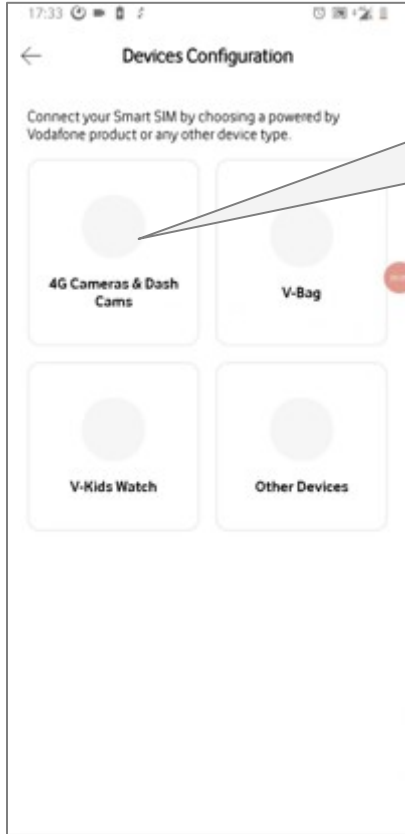
The credit card and the user information are being saved at this point.

The process is automatic. When done, the user will be taken to the next step.

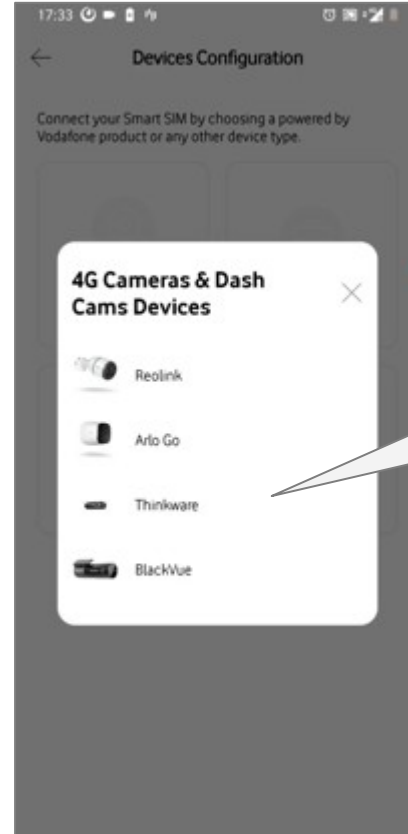
# Enter the Smart SIM (also known as V-Sim) product ID (printed on the packaging)



# Select the device that will use the Smart SIM

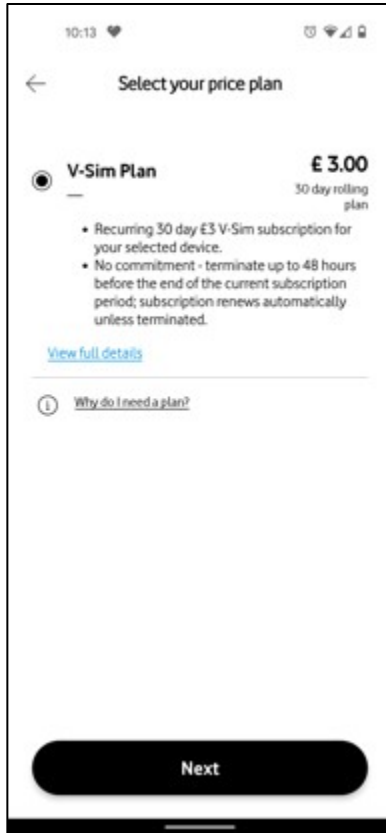


Select  
4G Camera & Dash Cams  
as the device type

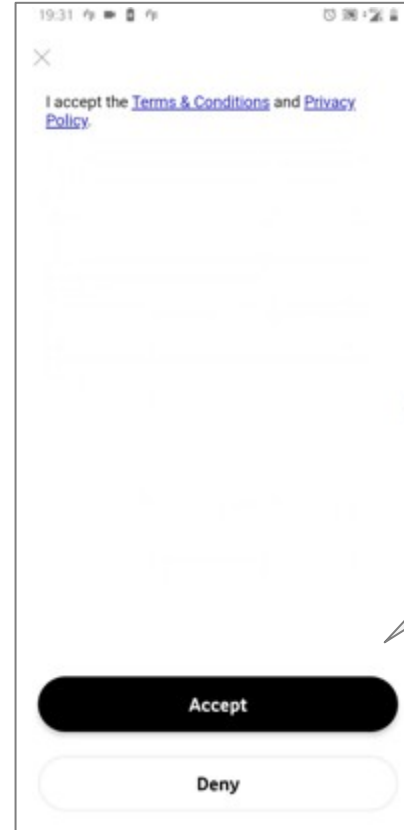


Select Thinkware  
as the Camera  
device

# Review & accept price plan

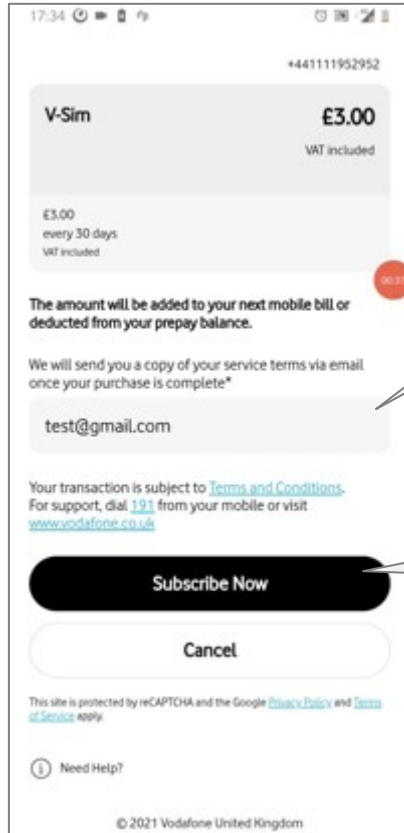


Review the price plan that should be activated and press Next



Accept the Price Plan Terms & Conditions and Privacy Policy

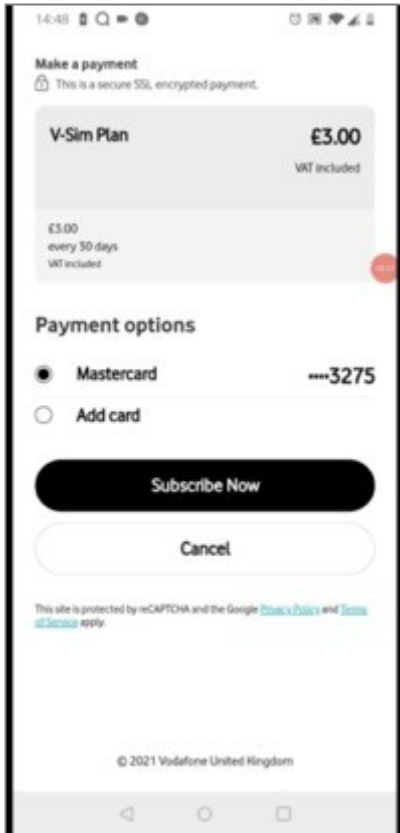
# Payment – with Vodafone mobile, charges to bill



Enter an email address to receive a copy of the service terms

After pressing on “Subscribe Now” the subscription will be automatically added to the end users monthly Vodafone bill.

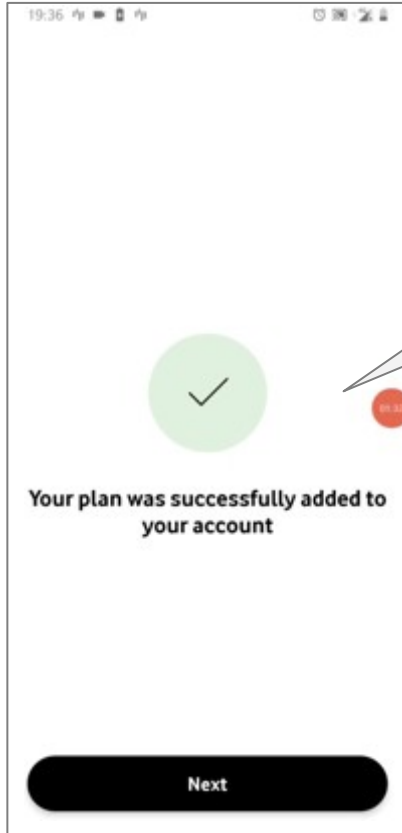
# Payment – without Vodafone mobile, charges to payment card



Select the credit card on file or add a new one then press on “Subscribe Now”

Services terms are sent to the email registered to the account

# Payment success

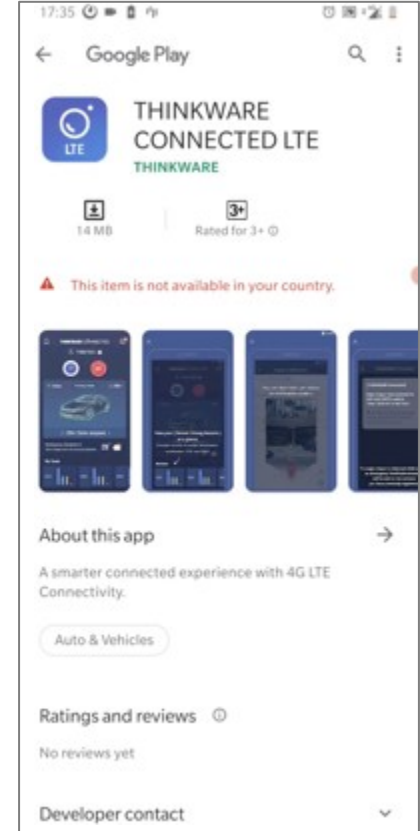


The Price Plan is now associated with the account and the Smart Sim is being activated

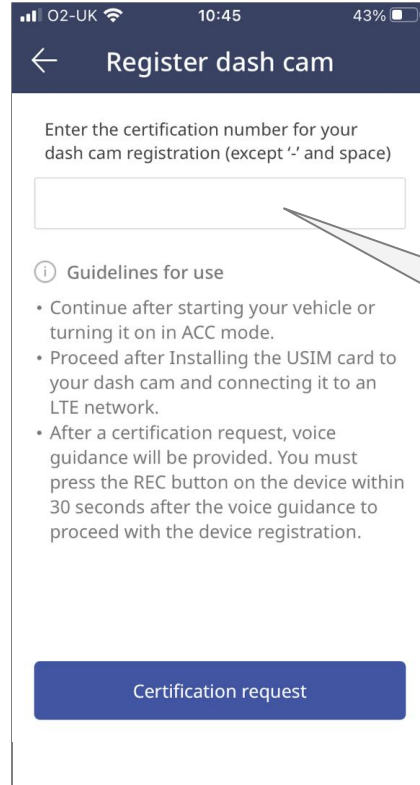
Press Next to advance

Press on “Go to Thinkware” to go to the relevant app store to get the Thinkware app (iOS or Android)

Press on “Not now” to return to the Vodafone Smart app dashboard



# SIM Registration



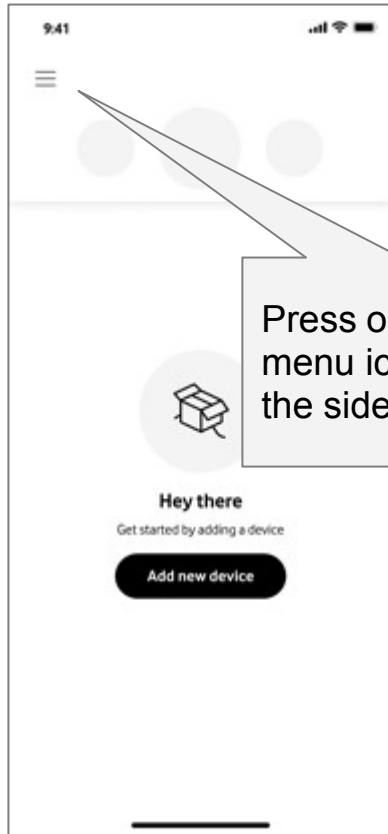
The screenshot shows a mobile application interface with a dark blue header containing a back arrow and the text 'Register dash cam'. Below the header, there is a text prompt: 'Enter the certification number for your dash cam registration (except \'.\' and space)'. This is followed by a white rectangular input field. Below the input field is a section titled 'Guidelines for use' with an information icon. It contains three bullet points: 'Continue after starting your vehicle or turning it on in ACC mode.', 'Proceed after Installing the USIM card to your dash cam and connecting it to an LTE network.', and 'After a certification request, voice guidance will be provided. You must press the REC button on the device within 30 seconds after the voice guidance to proceed with the device registration.' At the bottom of the screen is a dark blue button with the text 'Certification request'.

Enter the UCCID of the SIM here, so the SIM can be registered on the Connected server.\*

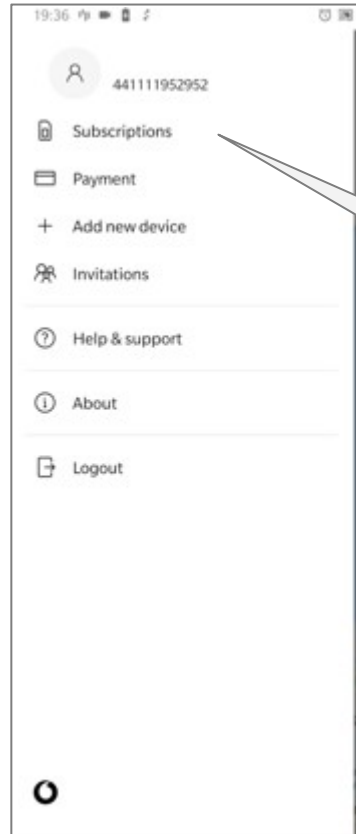
\*Up to 5 SIMs can be registered on one account.



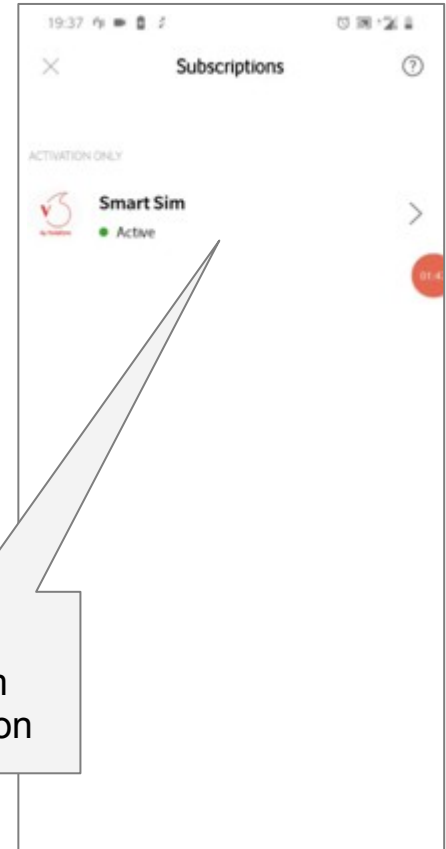
# Check subscription status



Press on the burger menu icon to open the side menu

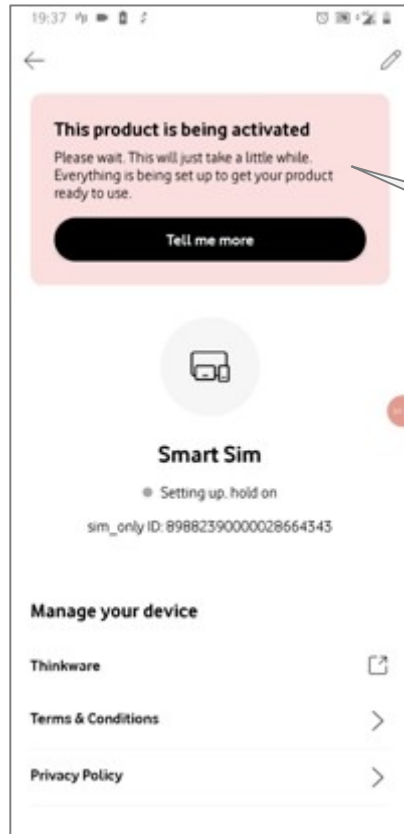


Press on Subscriptions



Select the Smart Sim subscription

# Subscription details



The activation process may take a few minutes to complete. Until it is done, end users will see this message